



Beyond Security

Samsung Digital Lock for Office Security & Access Control : SHS-7020/7120

Samsung's Security system provides for your home and office the ultimate protection with convenience and style

Unique style and exclusive design raise the standard of how door locks should look and feel.

01 Methods of Entry

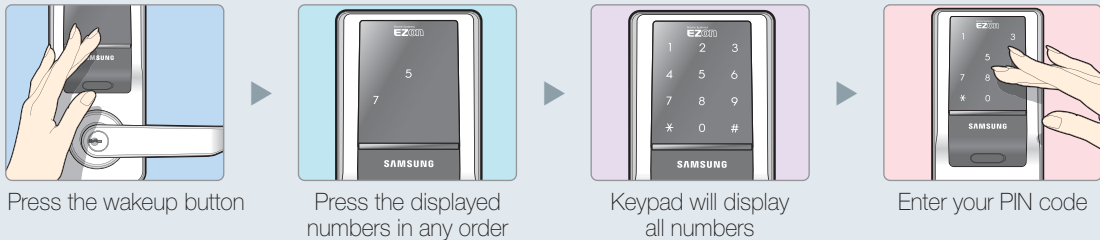
1. User access code



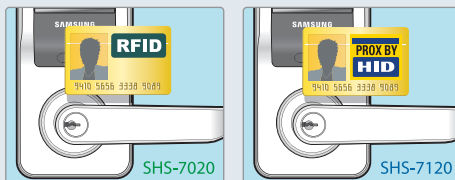
- Support 250 user codes (4~12 digit codes with security random coding) and/or RFID/HID cards/keyfobs (RFID - 7020 & HID Prox. - 7120)
- Digital touch control keypad with a regulated voltage touch technology

Random security coding

- When the wakeup button is pressed, 2 random numbers will be displayed on the keypad. The random numbers must be pressed prior to entering a PIN code. (Optional user feature)



2. RFID or HID Proximity card



- Built-in RFID (SHS-7020) or HID Prox. (SHS-7120) reader module supports card/keyfobs access

3. Mechanical override keys



- Mechanical key can be used to access the lock during power failure (dead batteries) or electrical malfunction



02 Event Management & Access Control



Audit trail & PC programming

- Time & date stamped 5,000 events (audit trail) can be downloaded via USB data port using a cable
- Ability to program at the lock or through a PC-based software (quick and easy user enrollment/data transfer with the proprietary software)



Multi-level user program

- Supports : 1 master, 10 administrators, 240 regular users & 1 single access code
- Program/delete group or individual access entry times, time zoning
- On/off passage mode

03 Enhanced Safety



Higher security

Five consecutive attempts to access the system with unauthorized user codes or card will activate the alarm and the keypad will lock for three minutes.



Electro Static Discharge (E.S.D) prevention

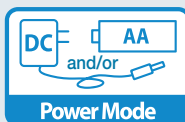
Protects circuit board from the damages incurred from high voltage shock.



Vandal & weather resistant body

Equipped with pry alarm and false attempts alarm. Suitable for indoor and outdoor installation.

04 Convenient Features



Power Mode

Supported by battery power or DC power

When DC power is down, batteries are used as a backup power



Volume Control

Emergency battery terminal

Temporarily jump starts the lock with 9V battery

Keypad volume control

Option of muting or 4 volume levels

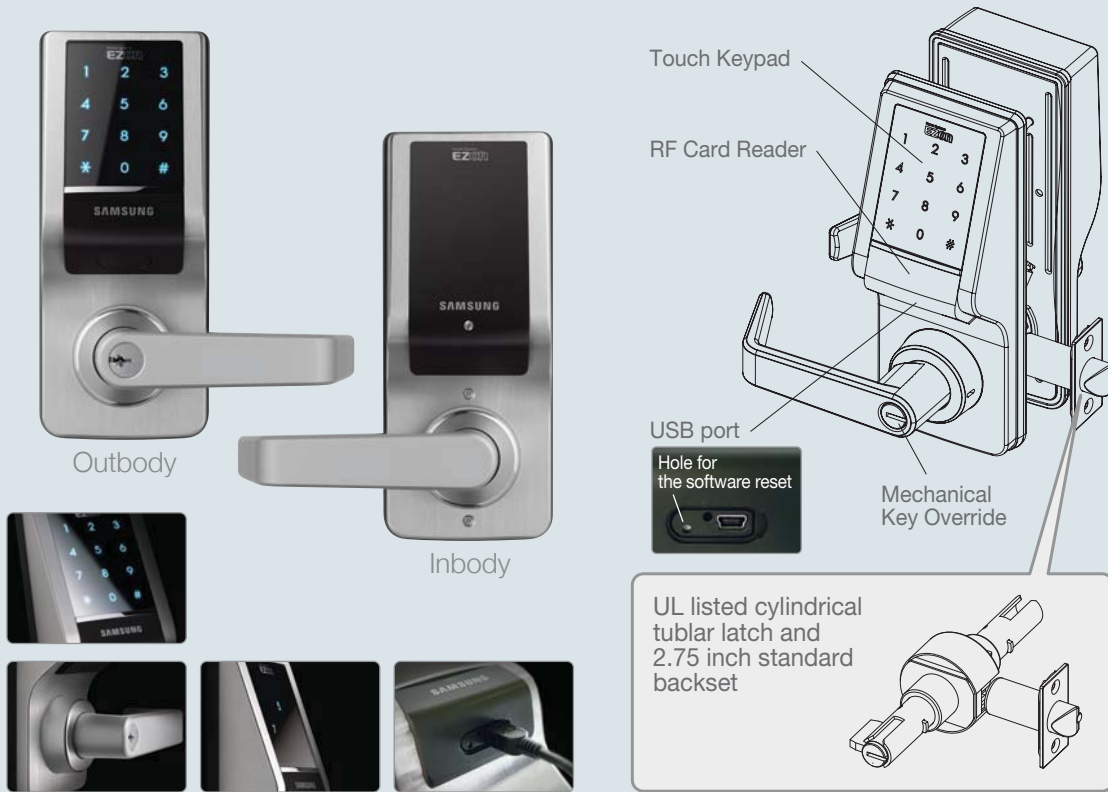


Replacing Alarm

Low battery warning signal

Replace batteries when a "beep" sound is heard during door access

Structure



Specifications

Product	RF Card	Module type - SHS-7020 : RFID (ISO14443A / 13.56MHz RF chip) - SHS-7120 : Compatible with most HID Proxcards [®] and Proxkey [®] keyfobs (37 bites or less) Capacity : Max. 250 (when in use of RF card only)
	PIN Code	Combination : 4~12 Digits number combination Capacity : Max. 250 (when in use of PIN code only)
	Mechanical override keys	3ea (UL listed)
	Material	Outbody : Zn, ACRIL, PC (Polycarbonate) Inbody : Zn, PC
	Working temperature	-21°F(-30°C) ~ +140°F(+60°C)
	Power	- DC 12V - Alkaline AA Battery 5pcs - Lifetime : about 12 months (twenty times per day)
Installation	Size (outbody & inbody)	3.38 x 8.74 x 2.71 inch (W x H x D) (include the lever) 86 x 222 x 69mm (W x H x D) (include the lever)
	Backset size	2.75 inch (70mm)
	Hole size	2.12 inch (54mm)
	Lock set	Latch bolt cylinder type (UL listed & Grade 1)
	Applicable door thickness	1.37~1.73 inch (35~44mm)



Exclusive Partner in
North America

Creative Vision Electronics, Inc.

1 South Corporate Drive, Riverdale, NJ 07457

Tel. 201-905-9200 Fax. 201-461-8556

www.CVEamericas.com